



Meet the Quick Laser™

An all-in-one circuit board printer.

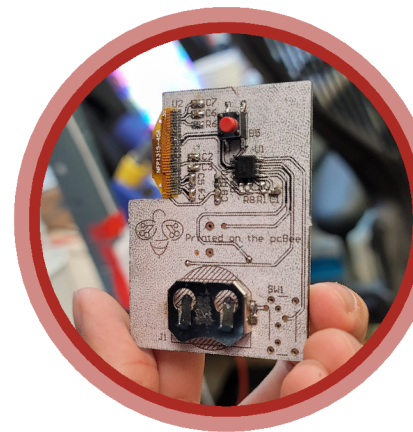
Create professional in-house PCBs
in 1 hour or less - no chemical
etchants required.

Made in the USA!



Print PCBs FAST

The Quick Laser™ eliminates PCB manufacturing lead times, allowing users to produce boards in under 1 hour instead of waiting weeks for third-party fabrication houses. Just as 3D printers streamline the creation of plastic parts, the Quick Laser™ offers a fast, easy solution for circuit board production, enhancing development and speed of design iterations.



A plethora of substrates to use

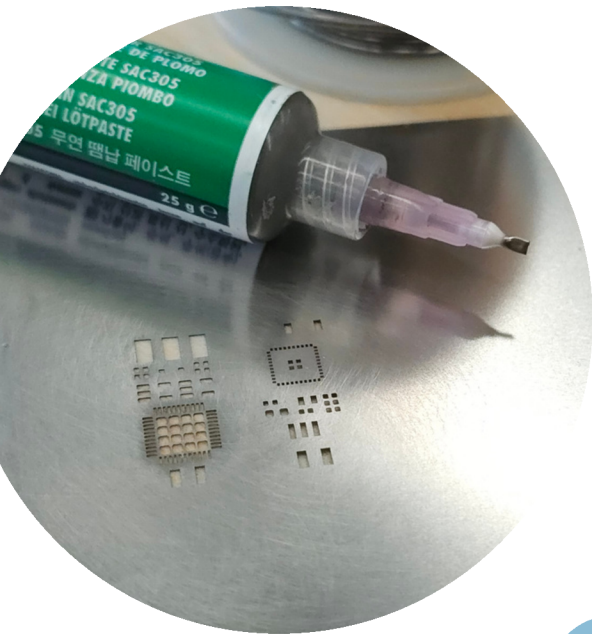
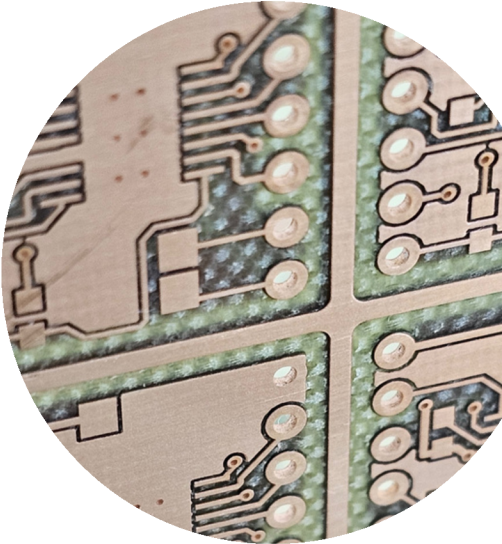
Hardware development often demands materials that go beyond traditional rigid FR4 circuit boards. The Quick Laser™ can print on a wide array of substrates for every use case:

- Flex
 - Often used in medical devices and wearables
- Ceramics and RF (Rogers Ro4000, TMM6, others)
 - Applications in RF, telecommunications, Physics research, Quantum Computing, and other high speed technologies
- Aluminum
 - Used for high-power, high-heat electronics in automotive, aerospace, and other industrial sectors
- +More
 - Contact us to learn more!

For these specialty materials, traditional fabrication house lead times often stretch from weeks to months, hindering project timelines significantly. In addition, these materials often command exorbitantly high prices that can quickly drain budgets. The Quick Laser™ allows engineers to focus on their projects and not worry about high materials costs or long lead times slowing their progress.

Rapid Plate Technology

With patent-pending Rapid Plate technology, you can plate your PCB's vias quickly and easily with pure copper. Thanks to our proprietary setup, boards just need to be drilled then plated; **no micro-etch solution, graphite compounds, or electroless copper needed!** Simply place the boards in our small desktop plating bath and have your boards ready to go in **2 hours or less.**



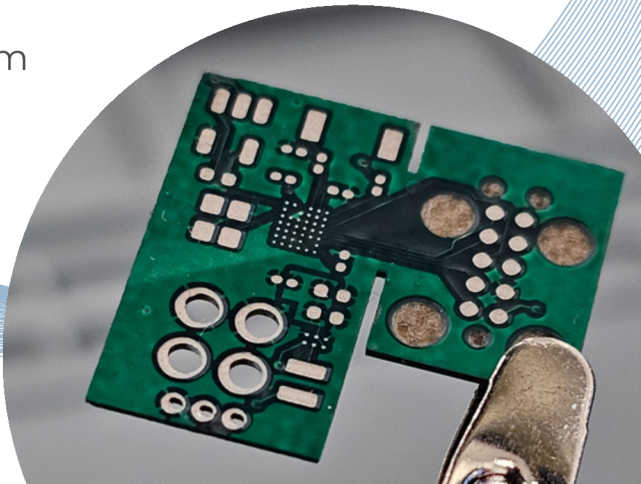
Print high resolution stencils

Our highly accurate laser allows you to print solder stencils with the same ultra-small feature sizes. Print on stainless steel, brass, polyimide, and more, at any thickness you need. Perfect for everything from prototype soldering to batch production to rework, simply upload a stencil file and print in minutes.

Manufacturing specs to do anything

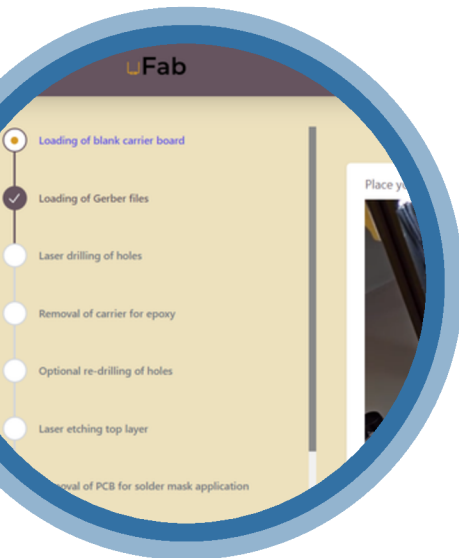
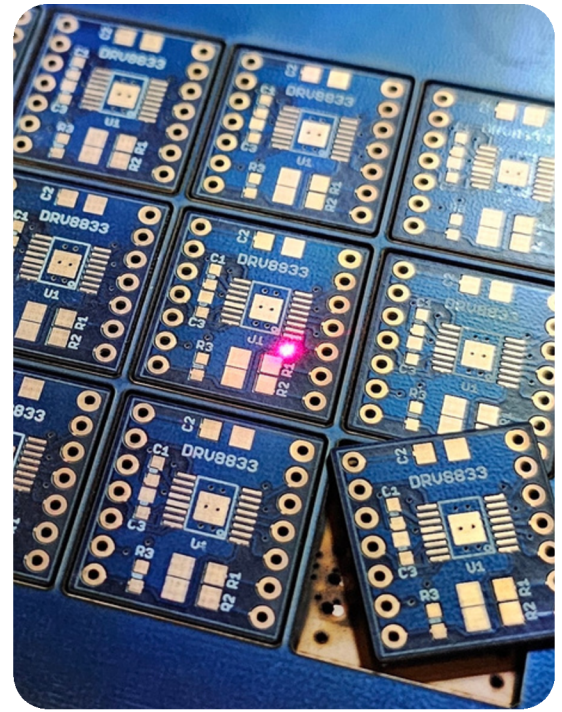
Design without compromise. The Quick Laser™ is built to make sure you're printing boards that can go straight to a production line, no design changes required. Choose any copper weight your design requires and etch down to 2 mil (50 µm) feature sizes for BGAs and 0201 parts. Drill clean 7 mil vias for dense interconnects with no minimum or maximum slot limitations.

Min. Trace Width	2 mil (50µm)
Min. Drill Hole	7 mils (175µm)
Copper Thickness	All Standard Thicknesses
Surface Finish	ENIG / IT / Cu
Copper Vias?	Yes
Slot support?	Yes
Countour Routing?	Yes



The Green way to make PCBs

Our machines remove copper via direct laser ablation rather than the traditional “coat, expose, etch, and strip” sequence. Because no photo-resist, developers, acids, or rinses are involved, the workflow **generates zero liquid or hazardous solid waste**. On top of that, producing boards on-site avoids the air-freight legs and courier van miles needed to deliver boards. The **Quick Laser™ is eliminating the two biggest ecological impacts from PCB production: CO2 emissions and industrial waste release.**

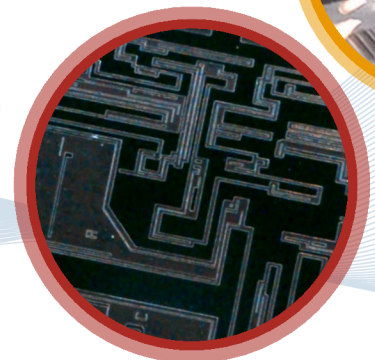


Easy to use software built for your users

We have focused intensely on making our machine **as easy to use as possible**. Rather than have a difficult learning curve and obtuse software, we work hand-in-hand with our customers to create the perfect software experience. Our software breaks down manufacturing into **easy to understand steps** with accompanying video and text tutorials.

Great for more than just circuit boards!

Thanks to the **20 micron spot size** on our laser, the Quick Laser™ is more than just a circuit board printer. Users can utilize the its unique material ablation abilities to create ultra-detailed lithographic masks, micro-etched surfaces, micro-fluidic structures, and other **unique applications in everything from biology to silicon manufacturing**. This makes the Quick Laser™ an incredible tool for materials processing that can broadly expand anyone’s production capabilities. Contact us to learn more!



Beating the competition.

The Quick Laser™ delivers where others can't

	Quick Laser™	OtherMill	LPKF	Voltera
Min. Trace Width	2 mils	10 mils	2-6 mils	8 mils
No Extensive Chemical Processing	✓	✓		✓
Full Domestic Support	✓	✓		✓
High Speed of Manufacturing	✓			
Silkscreen & Soldermask	✓			
Full Copper	✓	✓	✓	
Exotic Substrates	✓		✓	
Hardware and Software Consistency	✓			

Scan here or learn more at:
t-tech.com

